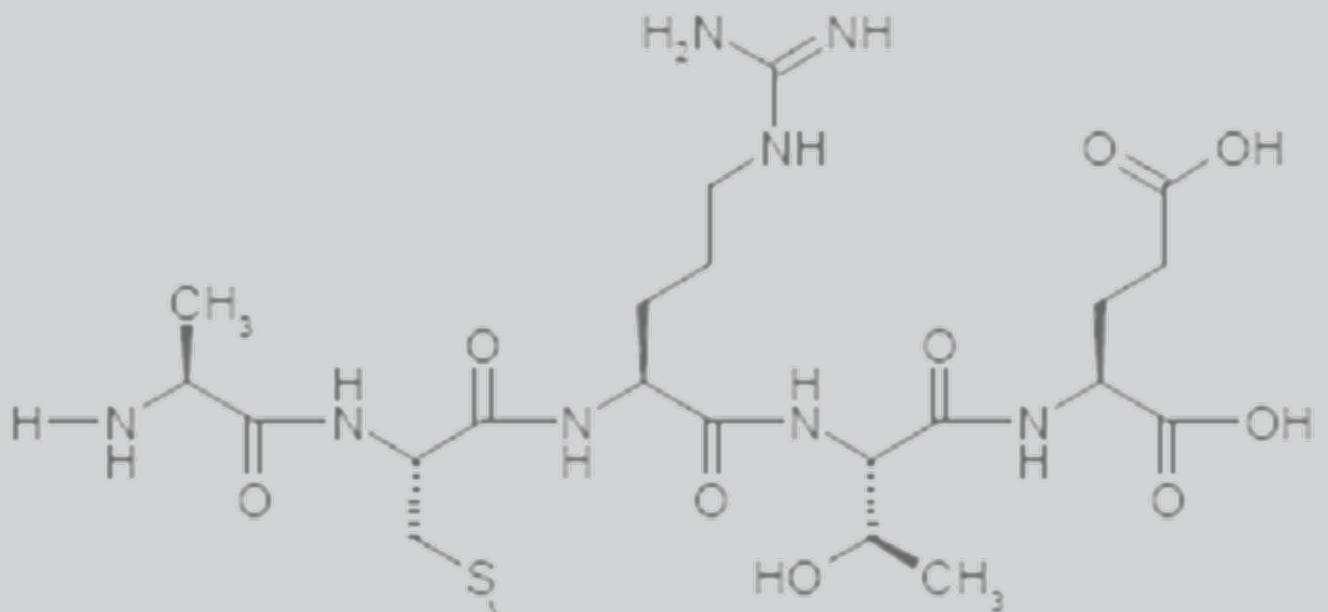




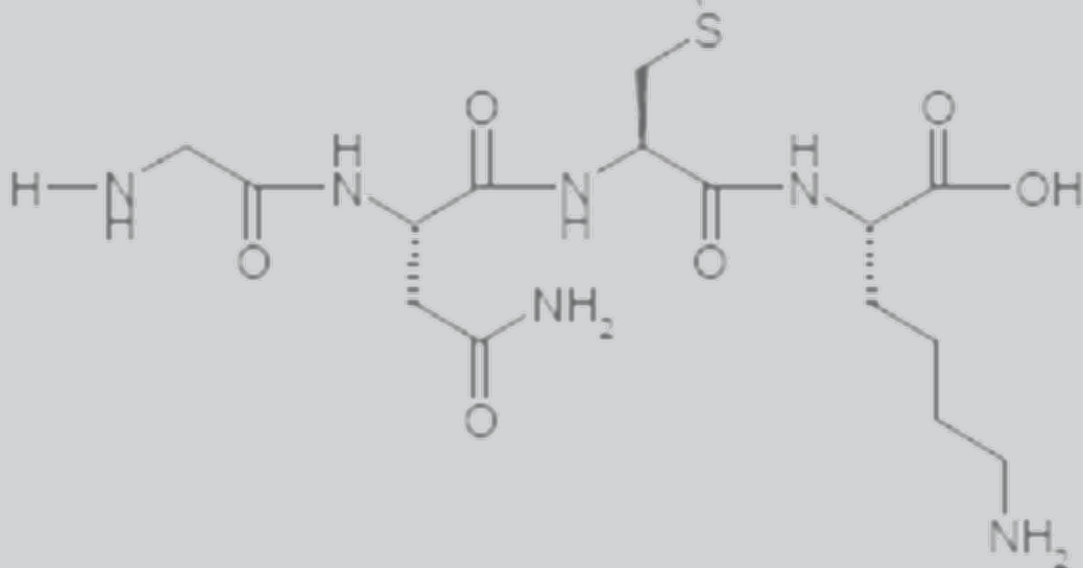
Next Generation Protein Technology





UNIQUE SOURCE OF BIOAVAILABLE PROTEINS

- Proprietary immuTEIN® technology increases the effectiveness of the biological proteins in plasma
- Immunoglobulins, cytokines, growth factors, transfer factors and other functional proteins are bioactive
- Leverages power of all immunological components of plasma
- Derived from porcine plasma
- Proprietary production process, including irradiation, which can destroy pathogens sometimes present in plasma





PROVEN RESULTS IN REAL FARROWING OPERATIONS

betaGRO® fed as a strategy in sow production systems has received positive feedback from owners, production managers and veterinarians.

Observations by owners, managers and veterinarians:

- Fewer abortions
- Piglet viability appeared to improve
- Sows were back on feed more quickly
- Shorter duration of breaks

UNIVERSITY SUPPORTED TRIAL CONFIRMS PRODUCER FEEDBACK

Research conducted by NutriQuest with technical support from the University of Minnesota was recently reported at the 2015 American Association of Swine Veterinarians Annual Meeting. Mature gilts at approximately 180 days of age and 280 lbs body weight were used in the trial. All gilts were confirmed PRRS negative prior to the start of the trial. A typical gestation diet (Control) and the Control diet plus betaGRO at 4 lb/ton (betaGRO) were used as the two dietary treatments.

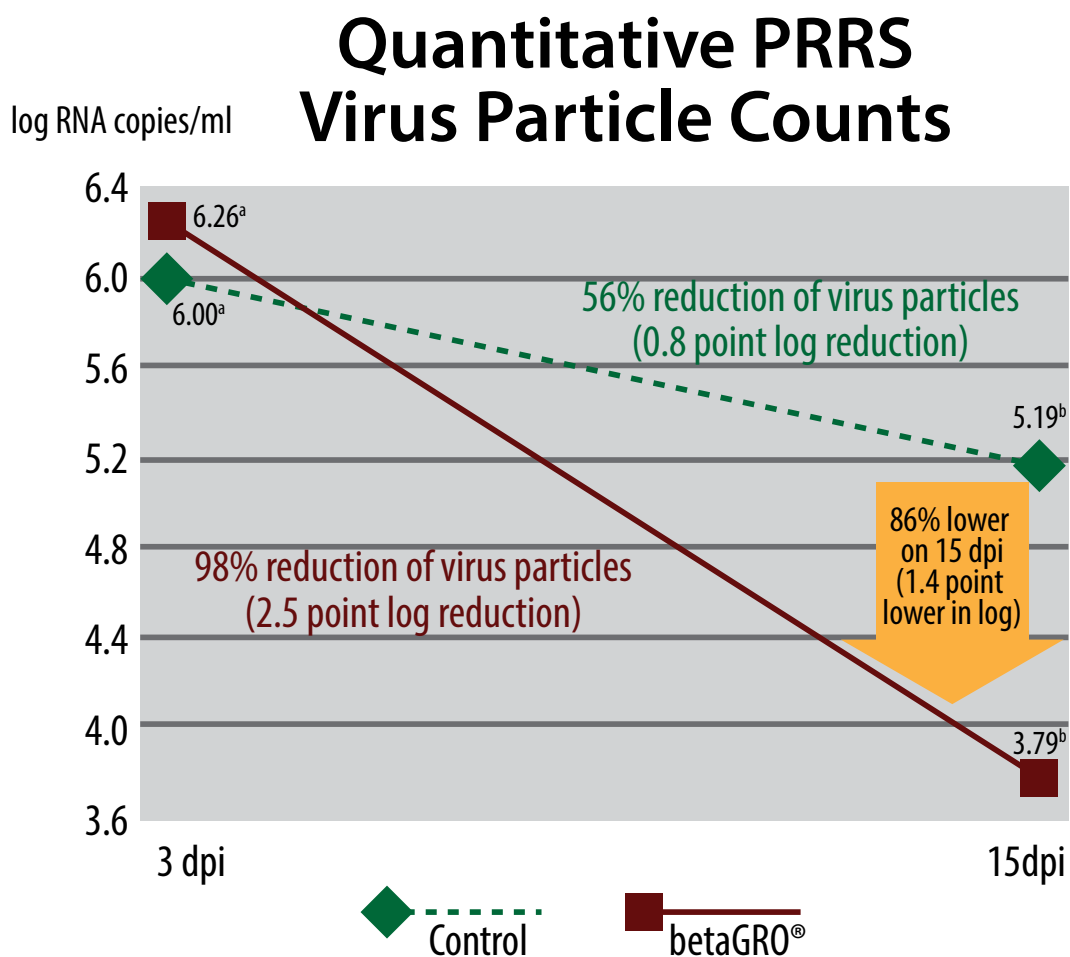
Diets were administered for 28 days prior to inoculation with the 1-8-4 strain of PRRS virus provided by the University of Minnesota Diagnostic Laboratory. Gilts were bled and rectal temperatures (RT) were taken at days 0 (0 dpi), 3 (3 dpi) and 15 (15 dpi) post-inoculation.

3 dpi
Bleed
Take RT

15 dpi
Bleed
Take RT

Serum samples were analyzed for virus concentration by the University of Minnesota Diagnostic Laboratory. All gilts (Control and betaGRO-fed) were positive for PRRS virus 3 dpi and virus load was high, as indicated by a value in excess of log 6.0 virus particles per ml of serum. Gilts fed betaGRO had significantly lower ($P < 0.05$) virus particle counts on 15 dpi (see figure).

Gilts fed betaGRO had lower rectal temperature than control gilts at 3 dpi (101.76 vs. 102.10, $p < 0.10$).



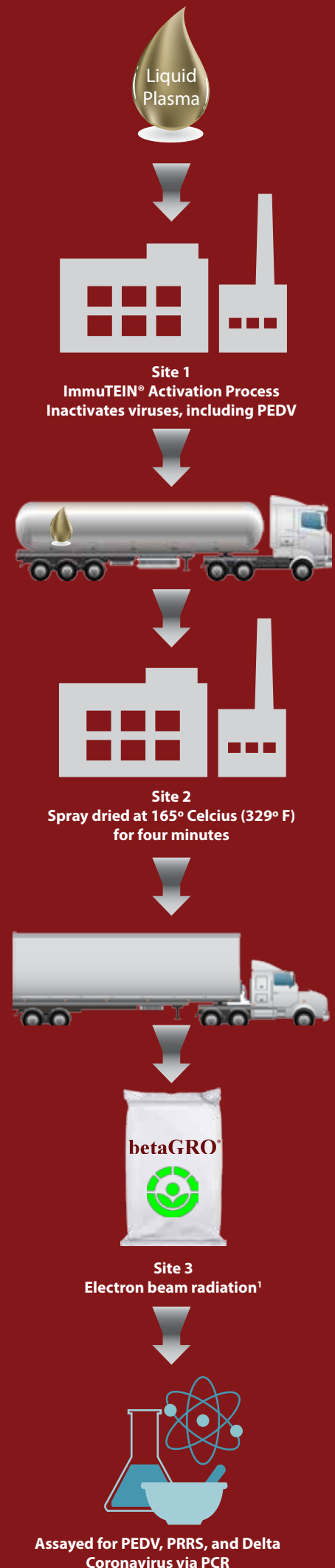


PROPRIETARY PRODUCTION PROCESS

SAFETY AT THE FOREFRONT

Puretein Agri utilizes multiple proprietary processes, including sterilization, to insure betaGRO is one of the safest biological proteins available today.

- Liquid plasma is subjected to a proprietary bioactivation process, ImmuTEIN Technology
- betaGRO in bi-level, heat sealed bags is transported and subjected to electron beam radiation
- Dedicated tanker trucks transport betaGRO
- Assayed for PEDV, PRRS and Delta Coronavirus via PCR
- betaGRO is spray dried well above temperatures shown to inactivate PEDV



¹ Puretein Agri is the only manufacturer that can use irradiation in the production of blood products for feed due to its exclusive patent license.



BETAGRO® USE IN SOWS

Feed betaGRO in sow feed during times of production challenge.

- Feed at 4-6 lb/ ton as a supplement during an active break
- Feed at 2-6 lb/ton as a protective strategy when there is the potential for a break

SEVERAL PRODUCERS HAVE INDICATED POSITIVE BENEFITS TO FEEDING BETAGRO TO SOWS DURING TIMES OF CHALLENGE

As an operator of a 15,000 sow production system, betaGRO has helped maintain sow and pig performance even with the many challenges that faced the swine industry in the last year. We see improved sow productivity and pig viability when feeding betaGRO to our sow herd.

- Owner, 15,000 sow farrow-to-finish operations in the Midwest U.S.

With the unprecedented challenges our sow herd has faced in 2014, betaGRO has helped minimize disruptions in our output. We have been able to minimize the disruption of pig flow and maintain better than expected pig viability when feeding betaGRO to our sow herd.

- Owner, 5,000 sow farrow-to-finish operation in the Midwest U.S.

To learn more about how betaGRO can benefit your sow feeding program, contact the nutrition professionals at NutriQuest®.

PRODUCED BY:



RESEARCHED and MARKETED BY:



3782 9th St SW • Mason City, IA
Phone: (641) 424-4798
www.nutriquest.com

DISCLAIMER: All numbers, projections, and the like contained herein regarding costs, expenses, production results, etc., are for ILLUSTRATIVE PURPOSES ONLY. The assumptions used and the resulting projections may not be appropriate for a given situation. ACTUAL RESULTS COULD VARY SIGNIFICANTLY. NUTRIQUEST® AND GBH Labs® MAKE NO WARRANTIES, EXPRESSED OR IMPLIED, REGARDING ANY SUCH PROJECTIONS, AND PARTICIPANTS AGREE THAT NUTRIQUEST® LLC AND GBH Labs®, LLC SHALL HAVE NO LIABILITY IN CONNECTION THEREWITH.